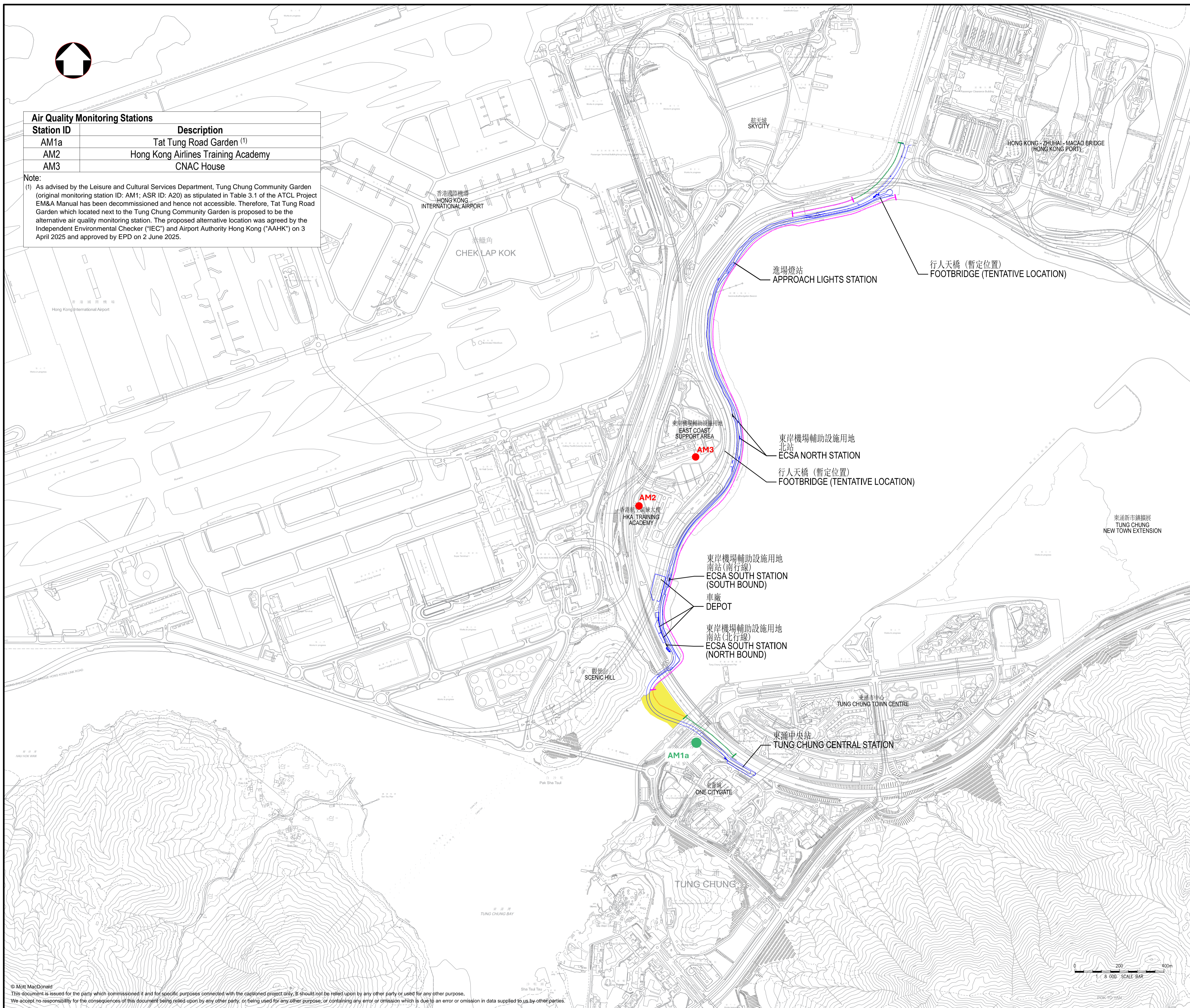


Air Quality Monitoring Stations	
Station ID	Description
AM1a	Tat Tung Road Garden ⁽¹⁾
AM2	Hong Kong Airlines Training Academy
AM3	CNAC House

Note:
 (1) As advised by the Leisure and Cultural Services Department, Tung Chung Community Garden (original monitoring station ID: AM1; ASR ID: A20) as stipulated in Table 3.1 of the ATCL Project EM&A Manual has been decommissioned and hence not accessible. Therefore, Tat Tung Road Garden which located next to the Tung Chung Community Garden is proposed to be the alternative air quality monitoring station. The proposed alternative location was agreed by the Independent Environmental Checker ("IEC") and Airport Authority Hong Kong ("AAHK") on 3 April 2025 and approved by EPD on 2 June 2025.

圖例
LEGEND

- 機場東涌專道走線
ALIGNMENT OF AIRPORT TUNG CHUNG LINK
- 陸上高架路段
LAND VIADUCT SECTION
- 海上高架路段
MARINE VIADUCT SECTION
- 地面路段
AT-GRADE SECTION
- 支線
SPUR LINE
- 海上高架施工區
WORKS AREA FOR MARINE VIADUCT
- AIR QUALITY MONITORING STATION (NO RELOCATION)
- AIR QUALITY MONITORING STATION (EPD APPROVED ALTERNATIVE STATION)



Rev	Date	Drawn	Description	Ch'k'd	App'd

M M
MOTT MACDONALD

3/F Manulife Tower
 348 Kwun Tong Road
 Kwun Tong, Kowloon
 Hong Kong
 T +852 2828 5757
 F +852 2827 1823
 W mottmac.com

Client

香港國際機場
HONG KONG INTERNATIONAL AIRPORT

Project

AIRPORT TUNG CHUNG LINK PROJECT

Title

LOCATION OF AIR QUALITY MONITORING STATIONS

Designed		Eng check	
Drawn		Coordination	
Dwg check		Approved	
Scale at A1	Status		Rev

Drawing Number **Figure 2.1**