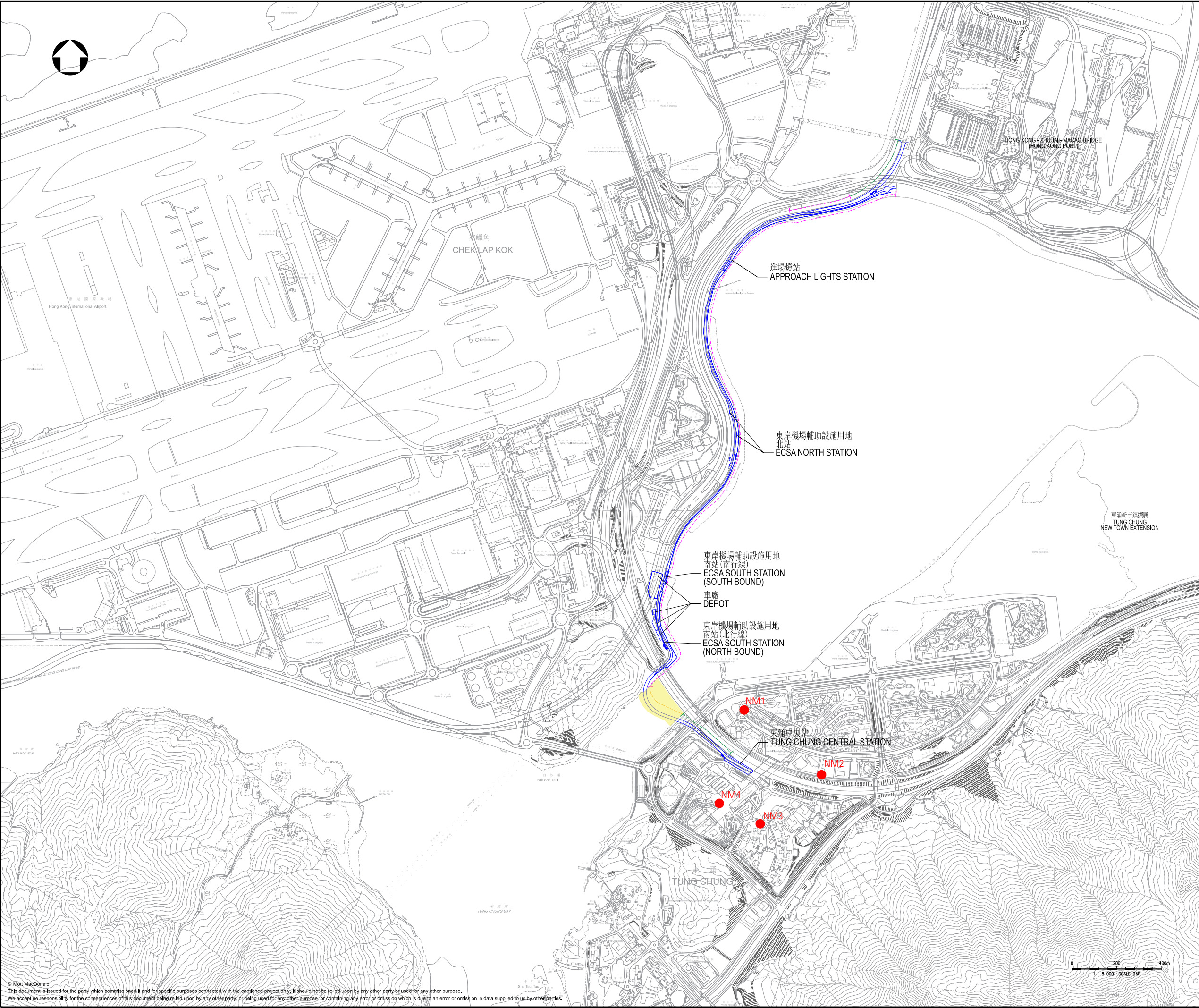


Figure 3.1: Noise Monitoring Stations



圖例
LEGEND

機場東涌專道走線
ALIGNMENT OF AIRPORT TUNG
CHUNG LINK

陸上高架路段
LAND VIADUCT SECTION

海上高架路段
MARINE VIADUCT SECTION

地面路段
AT-GRADE SECTION

海上高架施工區
WORKS AREA FOR
MARINE VIADUCT

NOISE
MONITORING STATIONS

Remark:

(1) The Priests' Quarters of the Planned Visitation Church Development (NM5) is under construction during the impact noise monitoring period. Subject to the construction programme of the planned NSR, its impact monitoring status will be reviewed when necessary.

Rev	Date	Drawn	Description	Ch'k'd	App'd
<div><div>M</div><div>M</div><div>MOTT MACDONALD</div></div>			3/F Manulife Tower 348 Kwun Tong Road Kwun Tong, Kowloon Hong Kong T +852 2828 5757 F +852 2827 1823 W mottmac.com		
Client					
Project AIRPORT TUNG CHUNG LINK PROJECT					
Title Noise Monitoring Stations					
Designed			Eng check		
Drawn			Coordination		
Dwg check			Approved		
Scale at A1	Status		Rev		
Drawing Number			Figure 3.1		