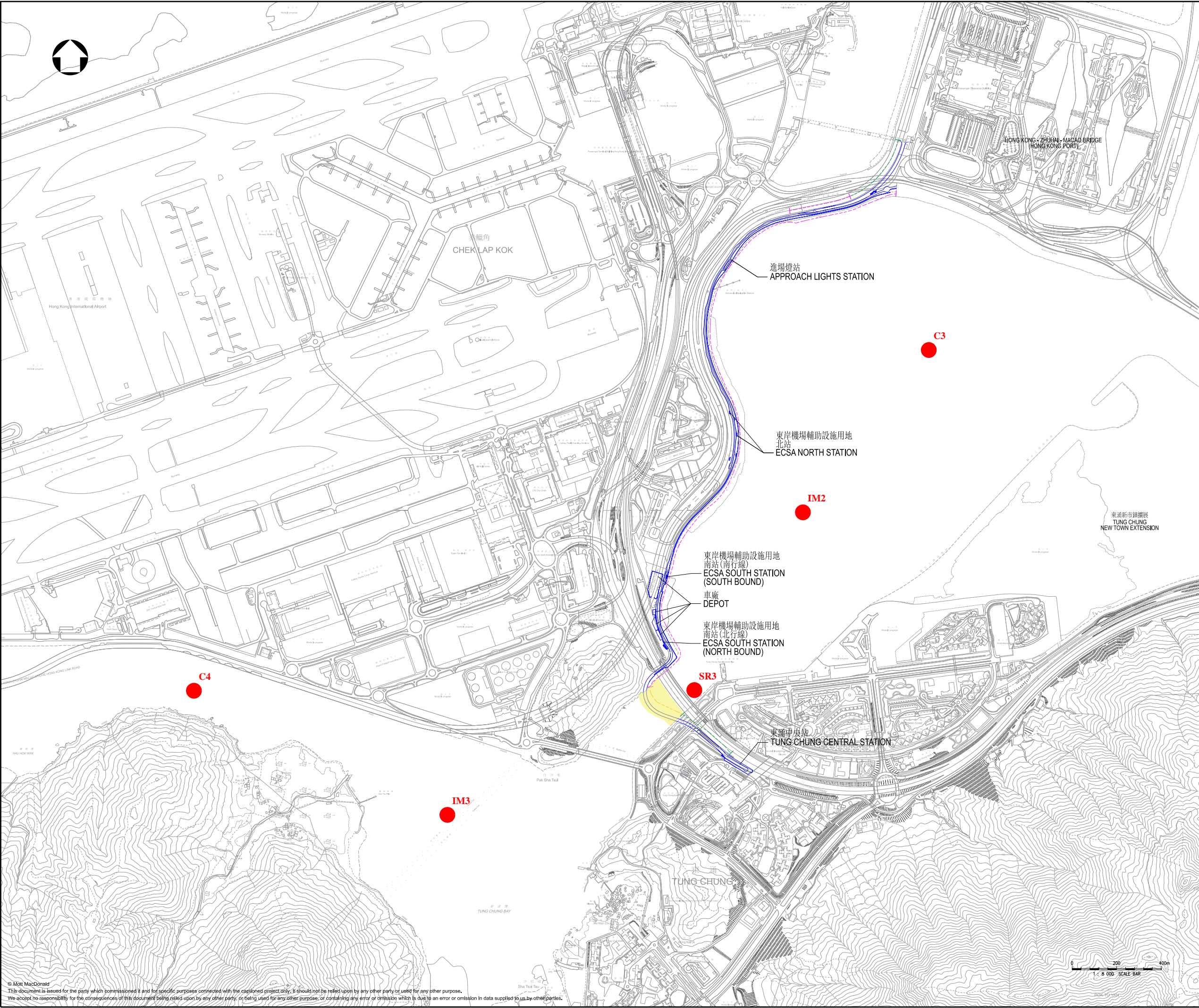


Figure 4.1: Water Quality Monitoring Stations



圖例
LEGEND

- 機場東涌專道走線
ALIGNMENT OF AIRPORT TUNG CHUNG LINK
- 陸上高架路段
LAND VIADUCT SECTION
- 海上高架路段
MARINE VIADUCT SECTION
- 地面路段
AT-GRADE SECTION
- 海上高架施工區
WORKS AREA FOR MARINE VIADUCT
- WATER QUALITY MONITORING STATIONS

Remark:
(1) The marine facilities in the waters between Airport Island and HKP Island are included in the approved ATCL Project EIAR and the ATCL Project EP, however, the construction of marine facilities is not included in the current stage of ATCL construction. Therefore, water quality monitoring will only be undertaken for the marine water quality monitoring stations for the marine viaduct (namely IM2, IM3, SR3, C3 and C4).

Rev	Date	Drawn	Description	Ch'k'd	App'd
<div> <div>MOTT MACDONALD</div> <div> <div>3/F Manulife Tower</div> <div>348 Kwun Tong Road</div> <div>Kwun Tong, Kowloon</div> <div>Hong Kong</div> <div>T +852 2828 5757</div> <div>F +852 2827 1823</div> <div>W mottmac.com</div> </div> </div>					
Client					
Project AIRPORT TUNG CHUNG LINK PROJECT					
Title Water Quality Monitoring Stations					
Designed			Eng check		
Drawn			Coordination		
Dwg check			Approved		
Scale at A1	Status		Rev		
Drawing Number			Figure 4.1		