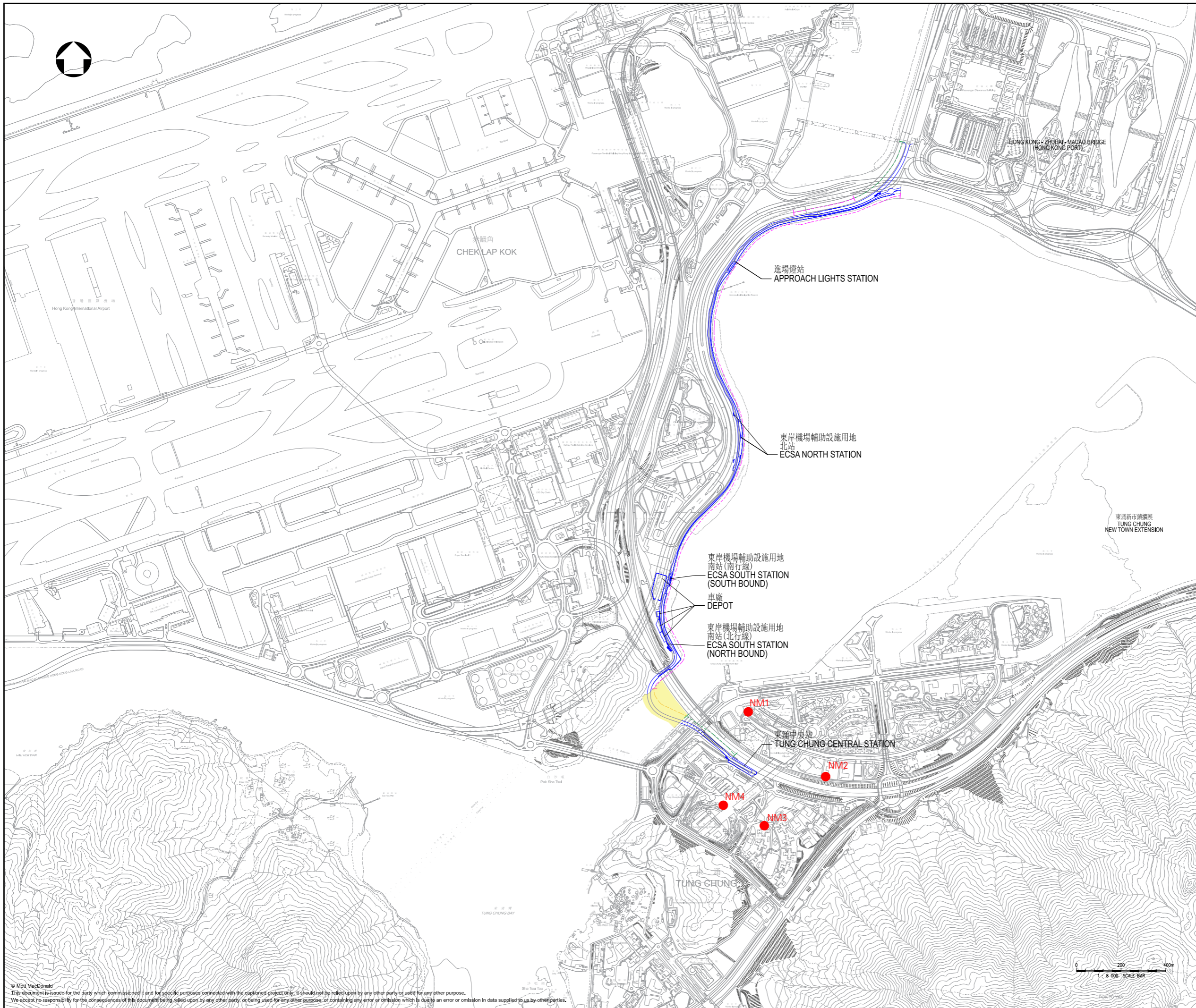


Figure 3.1: Noise Monitoring Stations



圖例
LEGEND

- 機場東涌專道走線
ALIGNMENT OF AIRPORT TUNG CHUNG LINK
- 陸上高架路段
LAND VIADUCT SECTION
- 海上高架路段
MARINE VIADUCT SECTION
- 地面路段
AT-GRADE SECTION
- 海上高架施工區
WORKS AREA FOR MARINE VIADUCT
- NOISE MONITORING STATIONS

Remark:
(1) The Priests' Quarters of the Planned Visitation Church Development (NM5) is under construction during the impact noise monitoring period. Subject to the construction programme of the planned NSR, its impact monitoring status will be reviewed when necessary.

| Rev | Date | Drawn | Description | Ch'k'd | App'd |
|---|------|--------|-------------------|--------|-------|
| <div style="display: flex; justify-content: space-between; align-items: center;"> <div style="text-align: center;"> M M MOTT MACDONALD </div> <div style="text-align: right;"> <p>3/F Manulife Tower 348 Kwun Tong Road Kwun Tong, Kowloon Hong Kong T +852 2828 5757 F +852 2827 1823 W mottmac.com</p> </div> </div> | | | | | |
| Client | | | | | |
| Project AIRPORT TUNG CHUNG LINK PROJECT | | | | | |
| Title Noise Monitoring Stations | | | | | |
| Designed | | | Eng check | | |
| Drawn | | | Coordination | | |
| Dwg check | | | Approved | | |
| Scale at A1 | | Status | | Rev | |
| Drawing Number | | | Figure 3.1 | | |

