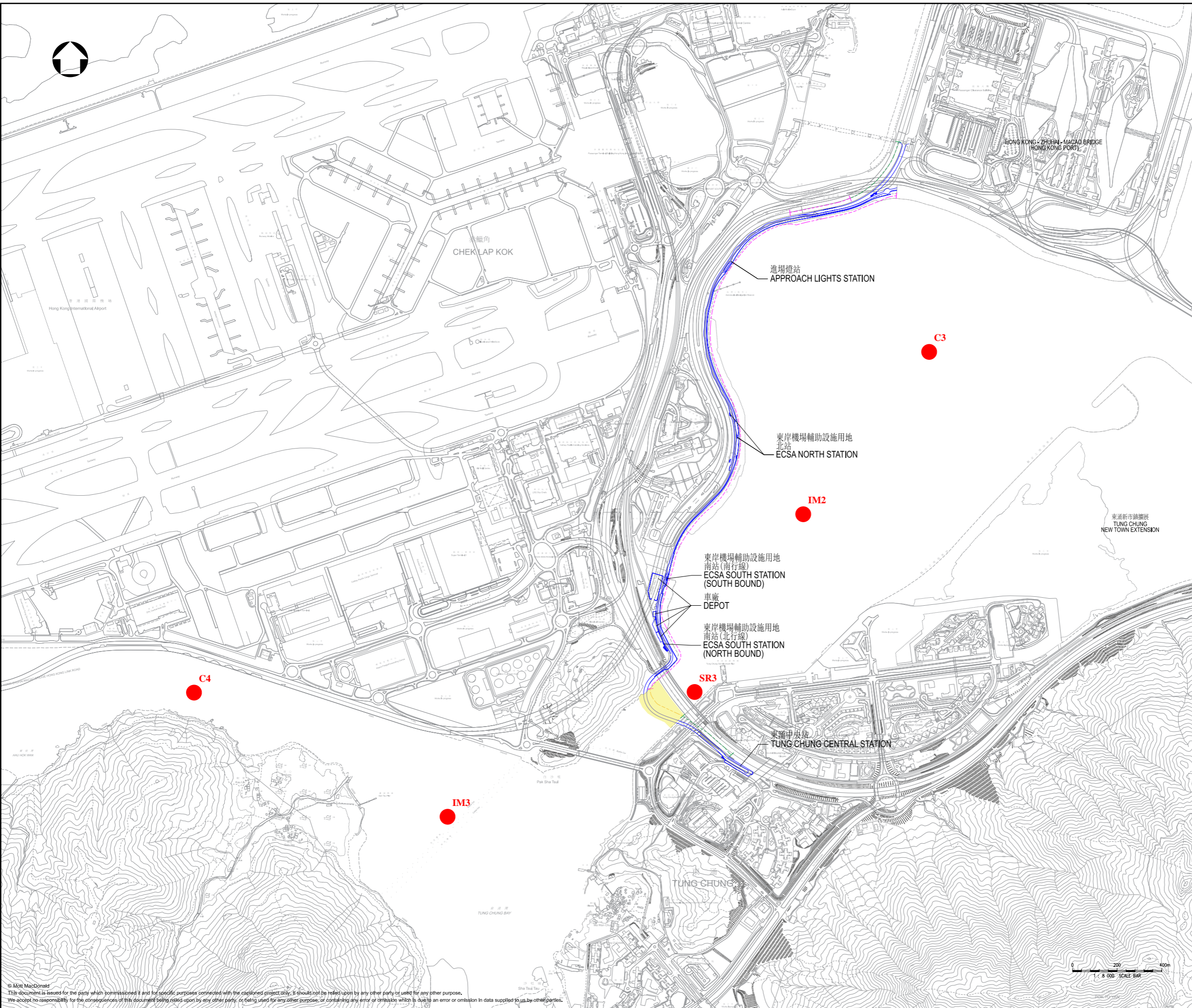


Figure 4.1: Water Quality Monitoring Stations



圖例
LEGEND

- 機場東涌專道走線
ALIGNMENT OF AIRPORT TUNG CHUNG LINK
- 陸上高架路段
LAND VIADUCT SECTION
- 海上高架路段
MARINE VIADUCT SECTION
- 地面路段
AT-GRADE SECTION
- 海上高架施工區
WORKS AREA FOR MARINE VIADUCT
- WATER QUALITY MONITORING STATIONS

Remark:
(1) The marine facilities in the waters between Airport Island and HKP Island are included in the approved ATCL Project EIAR and the ATCL Project EP, however, the construction of marine facilities is not included in the current stage of ATCL construction. Therefore, water quality monitoring will only be undertaken for the marine water quality monitoring stations for the marine viaduct (namely IM2, IM3, SR3, C3 and C4).

Rev	Date	Drawn	Description	Ch'k'd	App'd

M MOTT MACDONALD	3/F Manulife Tower 348 Kwun Tong Road Kwun Tong, Kowloon Hong Kong T +852 2828 5757 F +852 2827 1823 W mottmac.com	
	Client	
Project	AIRPORT TUNG CHUNG LINK PROJECT	
Title	Water Quality Monitoring Stations	
Designed	Eng check	
Drawn	Coordination	
Dwg check	Approved	
Scale at A1	Status	Rev
Drawing Number	Figure 4.1	