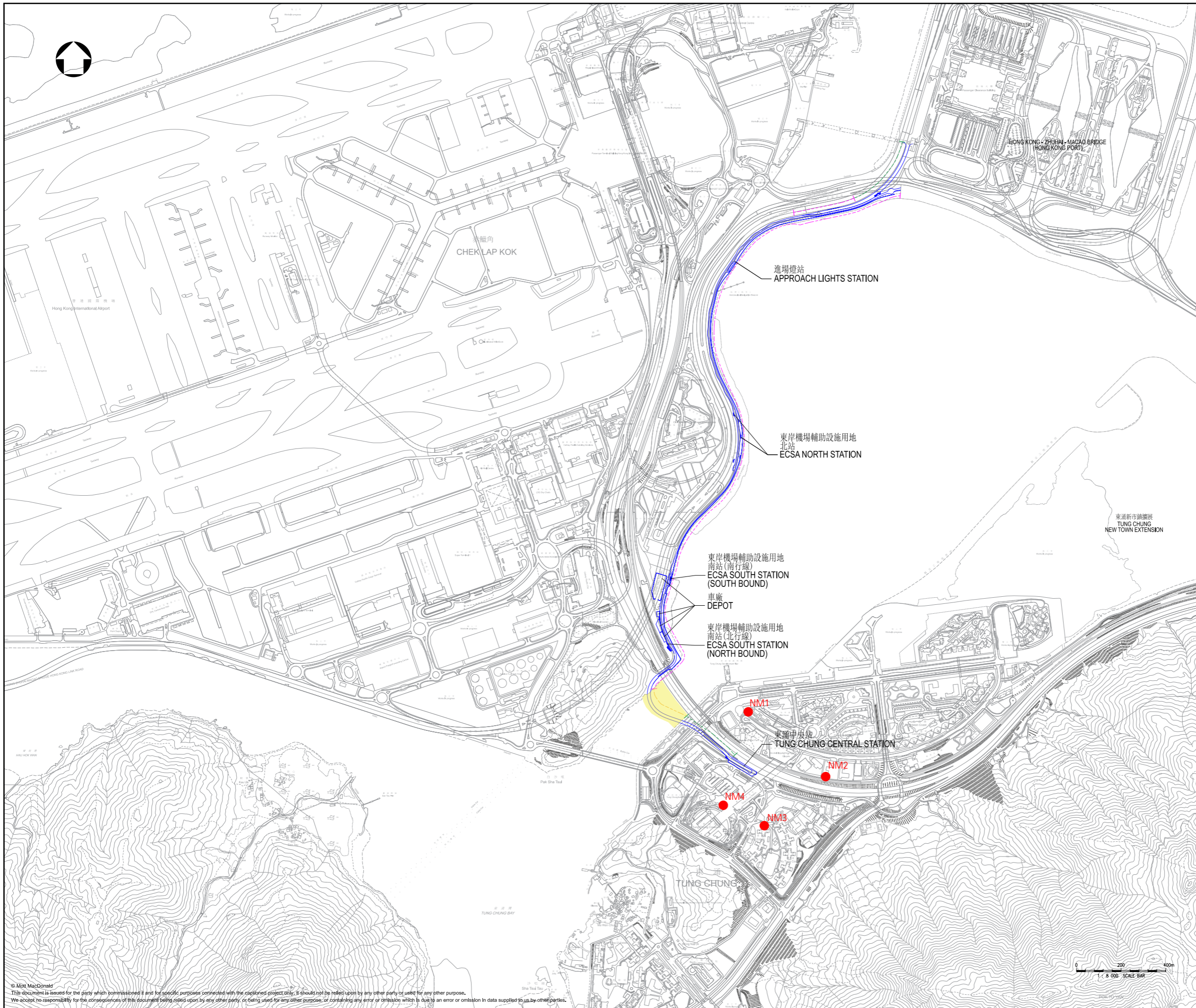


## **Figure 3.1: Noise Monitoring Stations**



圖例  
LEGEND

- 機場東涌專道走線  
ALIGNMENT OF AIRPORT TUNG CHUNG LINK
- 陸上高架路段  
LAND VIADUCT SECTION
- 海上高架路段  
MARINE VIADUCT SECTION
- 地面路段  
AT-GRADE SECTION
- 海上高架施工區  
WORKS AREA FOR MARINE VIADUCT
- NOISE MONITORING STATIONS

Remark:  
(1) The Priests' Quarters of the Planned Visitation Church Development (NM5) is under construction during the impact noise monitoring period. Subject to the construction programme of the planned NSR, its impact monitoring status will be reviewed when necessary.

Rev	Date	Drawn	Description	Ch'k'd	App'd
<div style="display: flex; justify-content: space-between; align-items: center;"> <div style="text-align: center;"> <span style="font-size: 2em; font-weight: bold;">M</span>  <span style="font-size: 2em; font-weight: bold;">M</span>  <b>MOTT MACDONALD</b> </div> <div style="text-align: right;">           3/F Manulife Tower            348 Kwun Tong Road            Kwun Tong, Kowloon            Hong Kong            T +852 2828 5757            F +852 2827 1823            W mottmac.com         </div> </div>					
Client					
Project <b>AIRPORT TUNG CHUNG LINK PROJECT</b>					
Title <b>Noise Monitoring Stations</b>					
Designed			Eng check		
Drawn			Coordination		
Dwg check			Approved		
Scale at A1		Status		Rev	
Drawing Number			<b>Figure 3.1</b>		