

A large teal graphic element on the left side of the page, consisting of a triangle at the top and a trapezoid below it, forming a shape that resembles a stylized 'M' or a mountain peak.

Airport Tung Chung Link Project

Construction Works Schedule and Location Plans

December 2025

This page left intentionally blank for pagination.

Mott MacDonald
3/F Manulife Place
348 Kwun Tong Road
Kwun Tong
Kowloon
Hong Kong

T +852 2828 5757
mottmac.hk

Airport Authority Hong Kong

Airport Tung Chung Link Project

Construction Works Schedule and Location Plans

December 2025

This Construction Works Schedule and Location Plans (December 2025)

of the


Airport Tung Chung Link Project

has been reviewed and certified by

the Environmental Team Leader (ETL) in accordance with

Conditions 1.9 and 2.10 of Environmental Permit No. EP-630/2023/A.

Certified by:



Ir Chan, Thomas
Environmental Team Leader (ETL)
Mott MacDonald Hong Kong Limited

Date

4 December 2025

Your Ref: -
Our Ref: 60743142/C/LLMC2512041

By Email

Capital Works Management Department
Level 6, HKIA Tower 2,
15 Cheong Tat Road,
Hong Kong International Airport,
Lantau, Hong Kong

Mr. Lawrence Tsui (Authority's Representative's Delegate)

4 December 2025

Dear Sir,

**Contract C24C03 – Independent Environmental Checker Consultancy Services for
Airport Tung Chung Link
Construction Works Schedule and Location Plans (December 2025)**

Reference is made to the Environmental Team's submission of the Construction Works Schedule and Location Plans (December 2025) in accordance with Conditions 2.10 of EP-630/2023/A of the Project, certified by the ET Leader on 4 December 2025.

We would like to inform you that we have verified on the captioned submission in accordance with the requirement stipulated in Condition 1.9 of EP-630/2023/A.

Should you have any queries, please feel free to contact the undersigned at 3856 5680.

Yours faithfully,
AECOM Asia Co. Ltd.



Lemon Lam
Independent Environmental Checker

Contents

1	Construction Works Schedule and Location Plans	1
1.1	Project Background	1
1.2	Purpose of this Submission	1
1.3	Construction Works Schedule	2
1.4	Location Plan	2
1.5	Major Construction Works	2
	1.5.1 Land Based Works	2
	1.5.2 Marine Based Works	3

Appendices

A. Construction Works Schedule

B. Location Plan

1 Construction Works Schedule and Location Plans

1.1 Project Background

The Airport Tung Chung Link (“ATCL”) is a dedicated road proposed by the Project Proponent, the Airport Authority Hong Kong (the “AAHK”). It is planned to extend the passenger transport services using autonomous vehicles (“AV”) from the Airportcity Link (“ACL”), which is currently under construction, to Tung Chung, aiming to enhance connectivity between the Hong Kong-Zhuhai-Macao Bridge (“HZMB”) Hong Kong Port (“HKP”), SKYCITY and Tung Chung.

ATCL Project, comprising ATCL and the marine facilities in the waters between Airport Island and HKP Island, is a designated project under Environmental Impact Assessment Ordinance (“EIAO”). The ATCL Project Environmental Impact Assessment Report (“EIAR”) (Register No. AEIAR-254/2023) was approved by the Director of Environmental Protection (“DEP”) and an Environmental Permit No. EP-630/2023 for the construction and operation of the ATCL Project was first granted by DEP to AAHK on 26 October 2023. Subsequently an application for variation of the EP was submitted on 3 November 2025 and the current valid EP (No. EP-630/2023/A, hereinafter known as “the EP”) was issued by EPD on 1 December 2025.

The marine facilities in the waters between Airport Island and HKP Island, and the spur line running from the HKP Island to connect the Academy Station are included in the ATCL Project EIAR (Register No. AEIAR-254/2023) and the ATCL Project EP (EP No. EP-630/2023/A), however, the construction of marine facilities and spur line is not included in the current stage of ATCL construction.

In February 2025, Mott MacDonald Hong Kong Limited (MMHK) was commissioned by AAHK under Contract C24C02 to provide Environmental Team (ET) consultancy services for implementation of an EM&A programme in accordance with the EP requirements throughout the Pre-construction, Construction and Post-construction phases of the ATCL Project.

1.2 Purpose of this Submission

As specified in Condition 2.10 of the EP:

“The Permit Holder shall, no later than 2 months before the commencement of construction of the Project, deposit 3 hard copies and 1 electronic copy of a work plan (The Plan) with the Director. The Plan shall include at least the following information/specifications:

- (i) a detailed phasing programme of the marine and land based construction works of the Project, demonstrating at most two marine piles will be constructed concurrently at the proposed marine facilities works area and the marine viaduct works area across Tung Chung Navigation Channel respectively; and*
- (ii) location plan of all construction works in appropriate scale showing the locations of proposed marine facilities, depot, excavation areas and bridge piers and / or abutments of the Project.”*

This submission is thus prepared to satisfy the requirements as stated in Condition 2.10 of the EP. As noted in **Section 1.1**, the marine facilities in the waters between Airport Island and HKP Island, and the spur line running from the HKP Island to connect the Academy Station are excluded from this submission. An updated submission would be provided to include the details of the marine facilities in the waters between Airport Island and HKP Island and the spur line running from the HKP Island to connect the Academy Station before commencement of

construction of the relevant works in accordance with the requirements as stipulated in Condition 2.10 of the EP.

1.3 Construction Works Schedule

The Construction Works Schedule of marine and land based construction works of the ATCL Project is provided in **Appendix A**, which demonstrating at most two marine piles will be constructed concurrently at the marine viaduct works area across Tung Chung Navigation Channel.

1.4 Location Plan

The location plan for the planned construction works of the ATCL Project based on the best available information is presented in **Appendix B**.

1.5 Major Construction Works

The major construction works of the ATCL Project involves marine and land based construction, with brief descriptions in the ensuing paragraphs.

1.5.1 Land Based Works

1.5.1.1 Tung Chung Central Station (TCCS)

The Tung Chung Central Station (TCCS) is an elevated platform arranged in a linear direction along Tat Tung Road.

1.5.1.2 Viaduct No. 1

Viaduct No. 1 is the land viaduct connecting the Tung Chung Central Station (TCCS) and Viaduct No. 2, which comprises 7 no. of piers (Bridge Pier 1 - Bridge Pier 7).

1.5.1.3 Seawall Modification

The seawall modification works would be conducted along the eastern coast of the Airport Island. This modification works will facilitate the construction of the at-grade road works, intermediate stops, the Promenade of the ATCL Project.

1.5.1.4 At-Grade Road Work and Promenade

At-grade Road

The construction of the ATCL at-grade road, spanning approximately 2.8 km along the eastern coast of Airport Island. Together with Viaducts 1, 2, and 3, the ATCL at-grade road will form a continuous road network facilitating passenger transport services from Tung Chung to the Hong Kong-Zhuhai-Macao Bridge (HZMB) Hong Kong Port.

Promenade

The construction of the Promenade along the eastern coast of Airport Island, following the new seawall cope line adjacent to the ATCL at-grade road. Spanning approximately 2.8 km, the Promenade will feature various waterfront elements.

1.5.1.5 Viaduct No. 3

Viaduct No. 3 is the land viaduct connecting the ACL at HZMB HKP, which comprises of 8 no. of piers (Bridge Pier 13 to Bridge Pier 20).

1.5.1.6 Office and Vehicle Depot (OVD)

The OVD would be constructed over the Scenic Hill Tunnel and part of the box culvert leading to the outfall. Excavation works would be involved for construction of OVD.

1.5.2 Marine Based Works

1.5.2.1 Viaduct No. 2

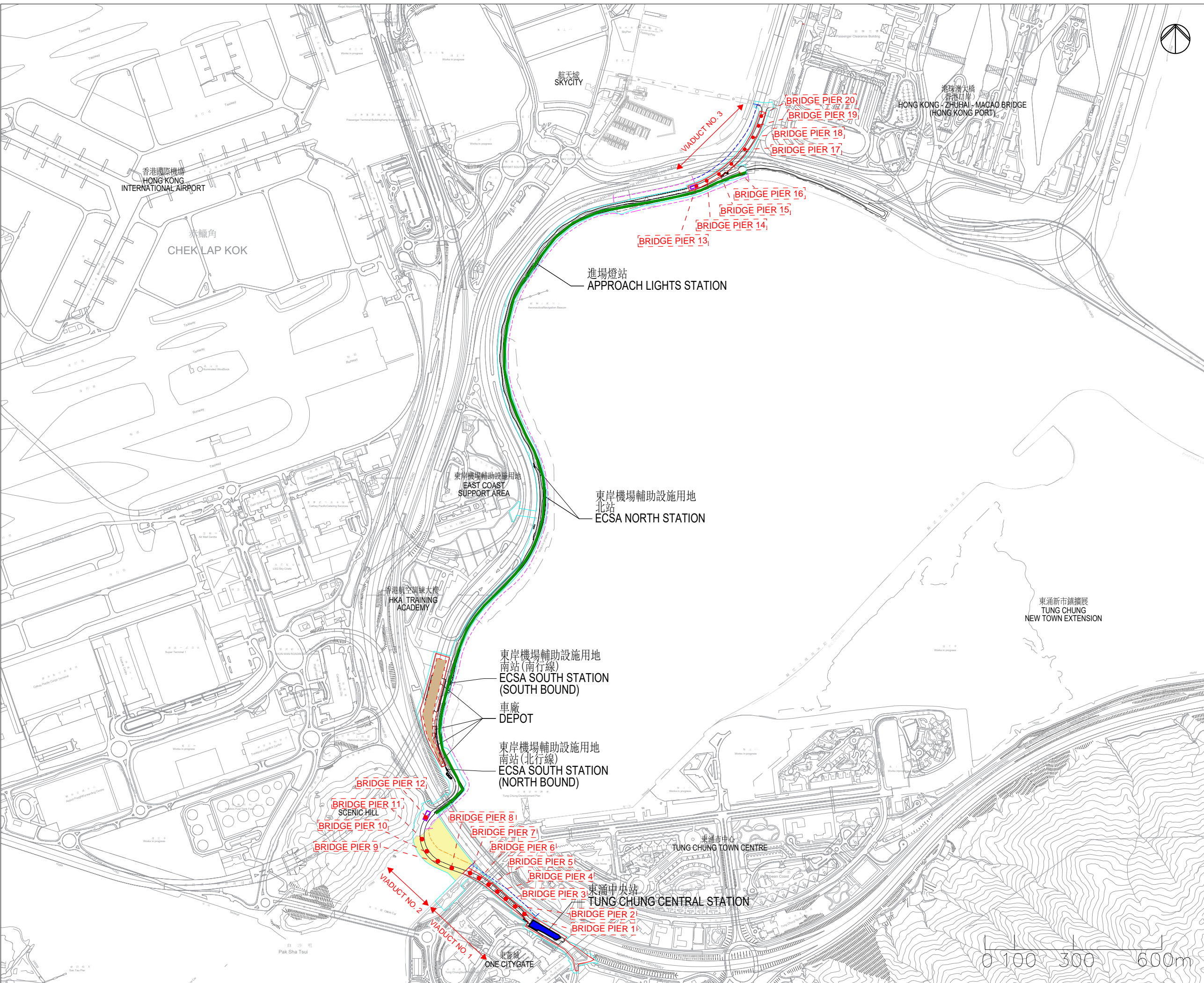
Viaduct No. 2 is the marine viaduct across Tung Chung Navigation Channel, which comprises 4 no. of piers (Bridge Pier 8 - Bridge Pier 11). This viaduct will reach the Airport Island near the base of Scenic Hill with a land based pier (Bridge Pier 12). For marine piles installation, silt curtain would be set up to enclose the active work area before commencement of piling works. Also, as presented in the Construction Works Schedule shown in **Appendix A**, at most two marine piles will be constructed concurrently for this viaduct.

Appendices

- A. Construction Works Schedule
- B. Location Plan

A. Construction Works Schedule

B. Location Plan



- LEGEND:**
- WORKS AREA
 - LAND VIADUCT SECTION
 - MARINE VIADUCT SECTION
 - AT-GRADE SECTION
 - WORKS AREA FOR MARINE VIADUCT
 - EXCAVATION AREA
 - OFFICE AND VEHICLE DEPOT
 - ABUTMENT
 - BRIDGE PIER
 - TUNG CHUNG CENTRAL STATION
 - SEAWALL MODIFICATION

	Prepared	Checked	Approved
Initial			
Date			

Project Title
 Airport Tung Chung Link

Drawing Title
 Appendix B - Location Plan

Drawing No.	Rev.

Scale:
 As Shown in Drawing